



Hotel Accommodations & Directions when Visiting the ADDA Piscataway Training Center

Anyone attending training at our Piscataway, NJ Training Center, or visiting ADDA that needs overnight accommodations should stay at:

Holiday Inn South Plainfield, NJ

Holiday Inn South Plainfield
4701 Stelton Road
South Plainfield, NJ 07080
Phone: (908) 753-5500 • Fax: (908) 668-1252
Email: info.hsp.hotel@hotelsunlimited.com

We have negotiated a special discounted rate of \$85/night. Simply mention that you are an Atlantic Detroit Diesel business partner. **Please Note: The hotel fees are your responsibility, ADDA does not cover any costs associated with hotel stays.**

Some of the features and amenities included in your stay include:

- Complimentary hot breakfast
- Free Wi-Fi
- Indoor pool and heated sauna
- Ruby Tuesday restaurant on premises
- Game room
- Fitness center
- Outdoor sundeck
- 24 Hour business center
- Other restaurants and activities within walking distance of hotel

Maps and directions are provided on the following pages.



Driving Directions to the Holiday Inn

From Rt. 287 North: Take exit 5, marked “Stelton Rd/Rt. 529-Dunellen.” Make a left at the top of the exit ramp onto Stelton Rd. Go to the second traffic light and make a left onto Hadley Rd. Go to the first traffic light and make a left into the rear of Staples parking lot. Follow to the rear of our parking lot.

From Rt. 287 South: Take exit 5, marked “Stelton Rd/Rt. 529-Edison.” Make a right onto Stelton Rd. at the first traffic light. Follow to the next traffic light and make a left onto Hadley Rd. Go to the first traffic light and make a left into the rear of Staples parking lot. Follow to the rear of our parking lot.

From Garden State Parkway (heading North): Take exit 127 to Rt. 287 North/Rt. 440 South. Follow directions from Rt. 287 North.

From Garden State Parkway (heading South): Take exit 129 to Rt. 287 North/Rt. 440 South. Follow directions from Rt. 287 North. From NJ Turnpike: Take exit 10 to Rt. 287 North/Rt 440 South. Follow directions above from Rt. 287 North.

From Rt. 1 North: Take the exit marked “Plainfield Ave/Edison.” Go around the jughandle and cross over Rt. 1. Stay on Plainfield Ave. about 4 miles, this becomes Stelton Rd. The hotel is on the right, just past the Middlesex Mall.

From Rt. 1 South: Take the exit marked “Plainfield Ave/Edison.” Stay on Plainfield Ave. about 4 miles, this becomes Stelton Rd. The hotel is on the right, just past the Middlesex Mall.

Holiday Inn to the Training Center:

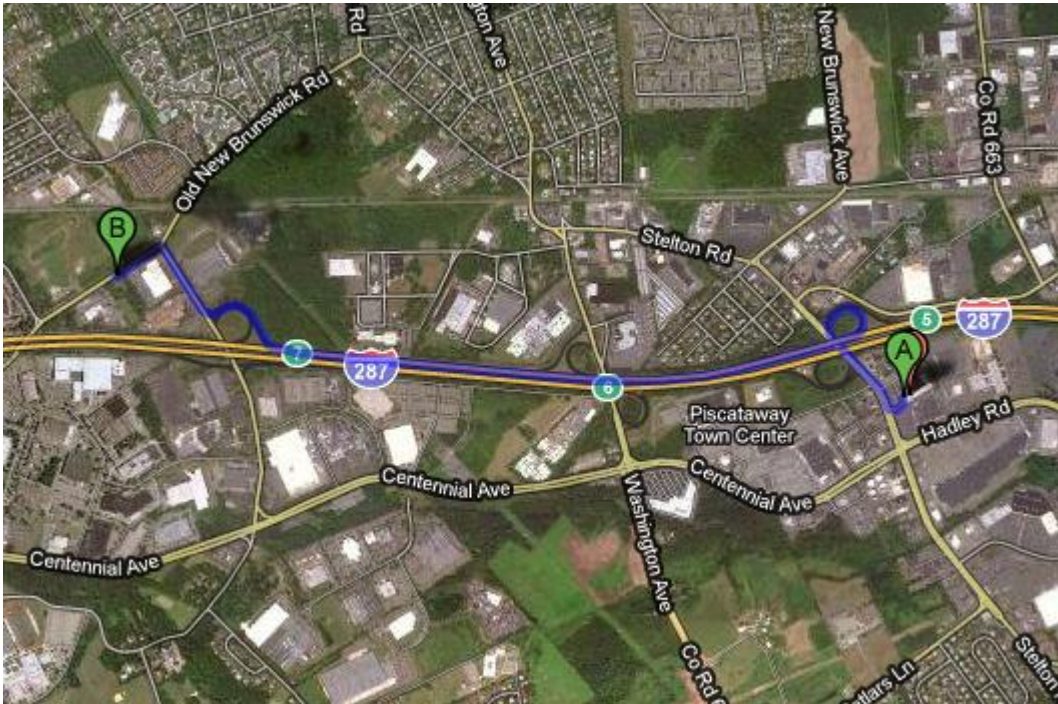


4701 Stelton Rd
South Plainfield, NJ 07080

1. Head **north** on **Stelton Rd** toward **Hadley Rd** 0.3 mi
2. Slight right to merge onto **I-287 N** 1.4 mi
3. Take exit **7** for **S Randolphville Rd** toward **Piscataway/Middlesex** 0.3 mi
4. Turn right at **S Randolphville Rd** 0.2 mi
5. Turn left at **Old New Brunswick Rd** 0.1 mi
Destination will be on the left



169 Old New Brunswick Rd
Piscataway Township, NJ 08854



For those attending our service technology courses:

- Please park in front of or nearest to the training center entrance.
- Please dress appropriately! Be sure to dress in uniform clothing with proper, protective footwear. Shorts, sandals, cut-off shirts and any clothing deemed in-appropriate by the instructor will not be allowed and you may be denied access to the training center.

- ❖ Atlantic Detroit Diesel – Allison takes great pride in presenting our classes on behalf of the manufacturers we represent:
 - Allison Transmission
 - Detroit Diesel
 - MTU
 - MTU Onsite Energy – formerly known as Katolight
- ❖ We know you will enjoy these classes and have a great learning experience as long as you actively participate.

We look forward to seeing you at our Piscataway training center!

Thanks,

ADDA Service Technology Department

Matt Riello (732) 424-2720, mattriello@atlanticdda.com – Director of Service Technology

Registrar

Donna Defino – (201) 489-5800, Ddefino@atlanticdda.com