

APPROVED AS DRAWN
 APPROVED AS NOTED
 REVISE AS NOTED, RESUBMIT

SIGNATURE _____ DATE _____



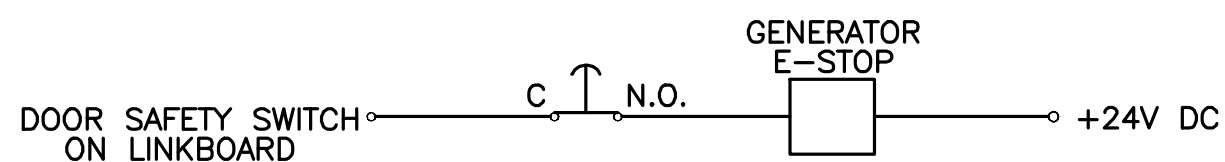
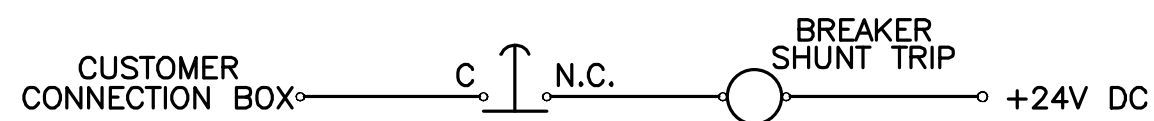
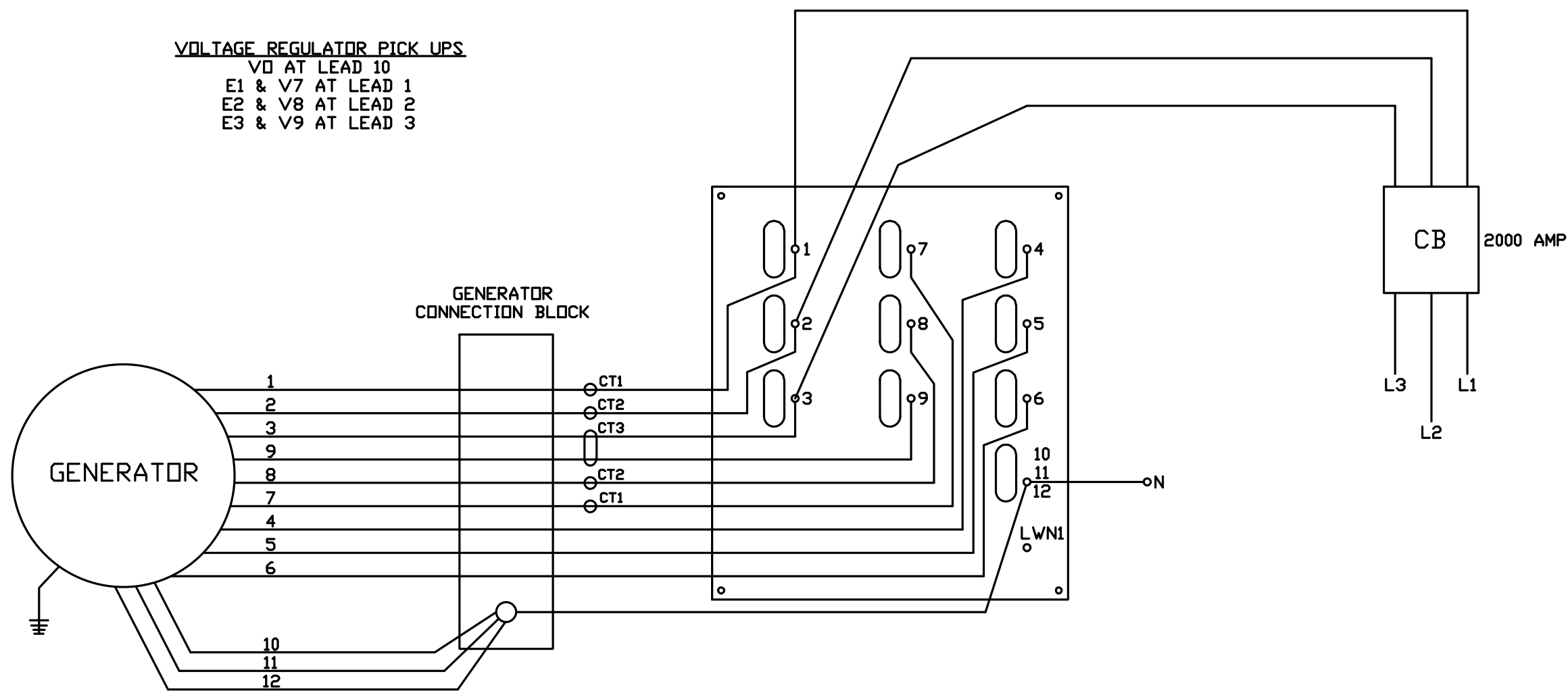
1740 EISENHOWER DRIVE
 P.O. BOX 5905
 DE PERE, WI 54115-5905
 (920) 490-3250 (MAIN)
 (920) 617-3308 (FAX)

THE DATA CONTAINED HEREIN IS PROPRIETARY AND CONFIDENTIAL, REPRODUCTION OR DISTRIBUTION OF ANY PART REQUIRES WRITTEN CONSENT OF ROBINSON CUSTOM ENCLOSURES. THE DATA IS THE PROPERTY OF ROBINSON CUSTOM ENCLOSURES AND ITS POSSESSION CONFERS NO LICENSE TO USE OR TO DISCLOSE IT TO OTHERS FOR ANY PURPOSE WHATSOEVER. ALL RIGHTS RESERVED

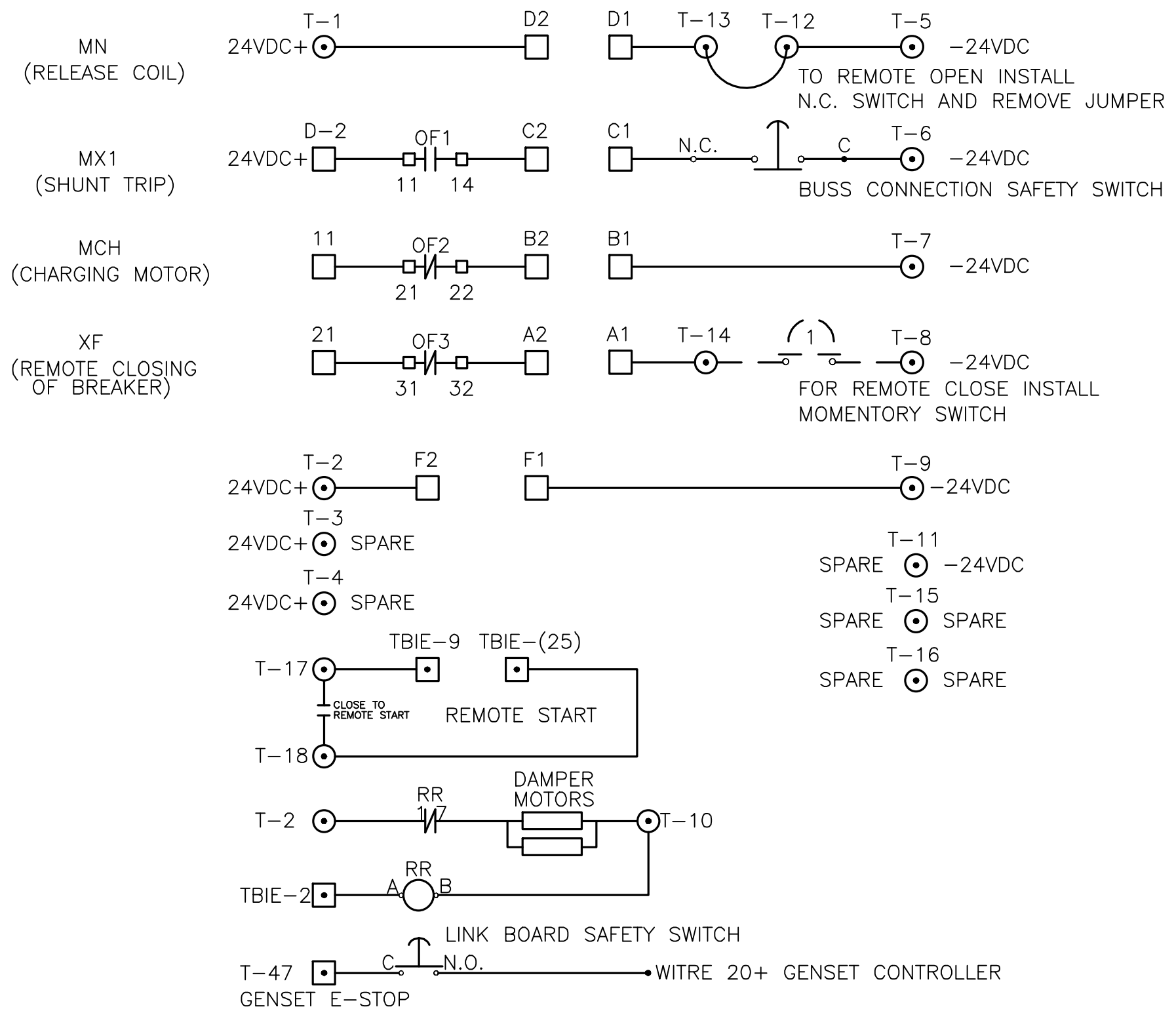
CUSTOMER NAME: ATLANTIC DETROIT DIESEL
 PROJECT NAME: ABLE EQUIPMENT
 TITLE: ELEVATION DRAWING DWG #: 928-D
 RCE QUOTE #: 52134-05 GENSET DWG #: 500PXC6DT2
 SHEET #: 2 of 6 DATE: 12/14/07 DRAWN BY: PR/DM CHECKED BY: CG

REV.	REVISION DESCRIPTION	DATE	BY	REV.	REVISION DESCRIPTION	DATE	BY
D	UPDATED ELECTRICAL	5/19/08	HB				
C	UPDATED ELECTRICAL	2/14/08	DM				
B	CHANGED TO 30' CONTAINER	1/21/08	DM				
A	CHANGED TO 20'L X 102H ISO BOX, ADDED BREAKER BOX DETAIL	1/08/08	PR				

VOLTAGE REGULATOR PICK UPS
 VD AT LEAD 10
 E1 & V7 AT LEAD 1
 E2 & V8 AT LEAD 2
 E3 & V9 AT LEAD 3

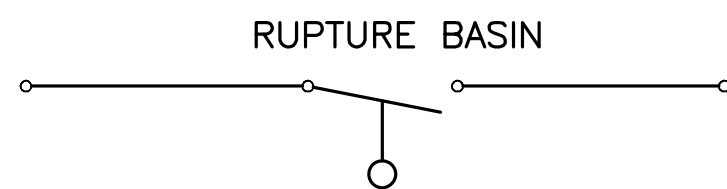
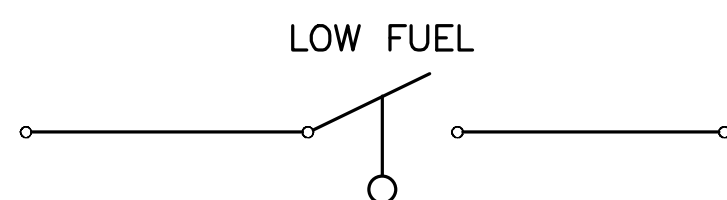
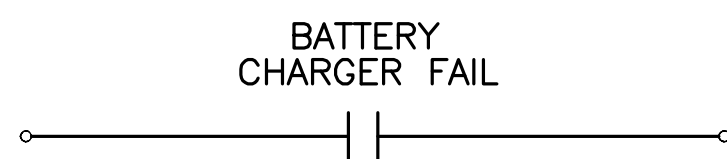


— FIELD INSTALLABLE OPTIONS
 R.R. RUN RELAY
 □ GENERATOR CONTROLLER
 □ CB CONNECTIONS
 ⊙ COMMUNICATION J-BOX

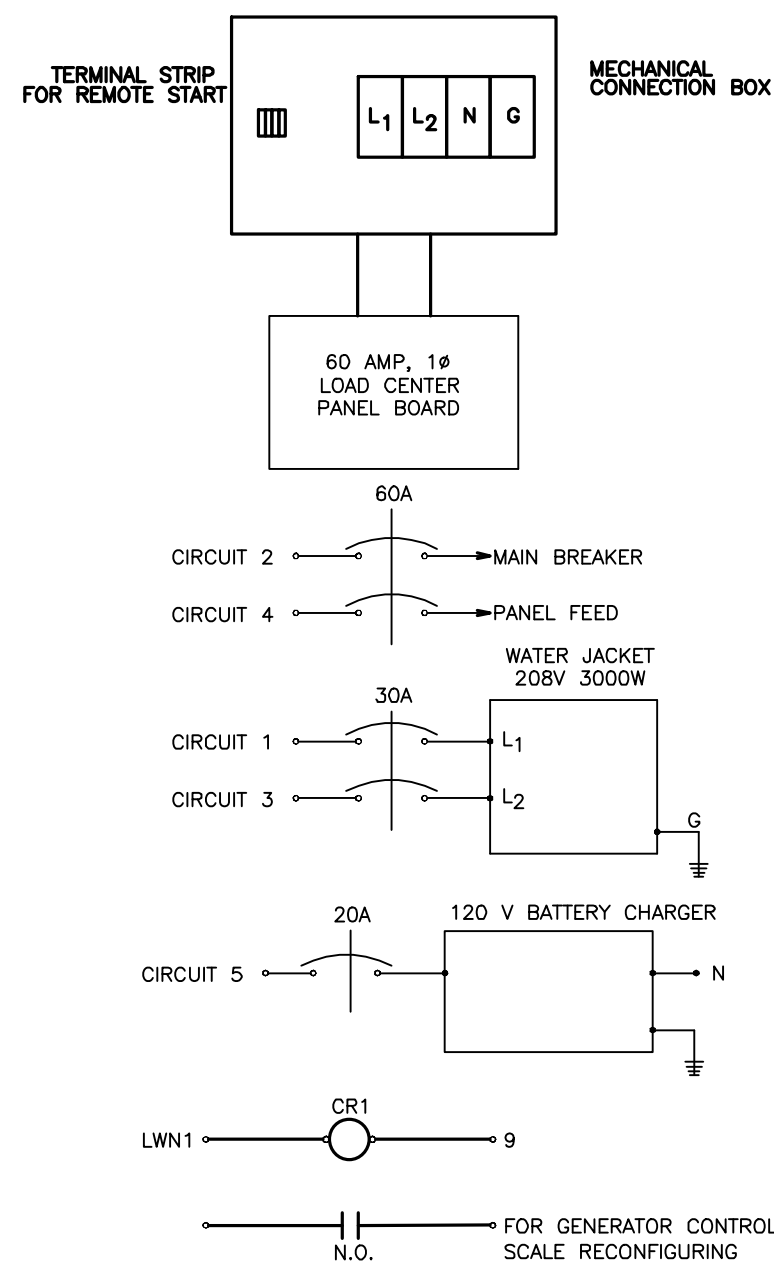


DC ELECTRICAL

ALARM TERMINATIONS DETERMINED BY CONTROLLER TERMINAL STRIP



SHORE POWER BOX



THE DATA CONTAINED HEREIN IS PROPRIETARY AND CONFIDENTIAL. REPRODUCTION OR DISTRIBUTION OF ANY PART REQUIRES WRITTEN CONSENT OF ROBINSON CUSTOM ENCLOSURES. THE DATA IS THE PROPERTY OF ROBINSON CUSTOM ENCLOSURES AND ITS POSSESSION CONFERS NO LICENSE TO USE OR TO DISCLOSE IT TO OTHERS FOR ANY PURPOSE WHATSOEVER. ALL RIGHTS RESERVED.

CUSTOMER NAME: ATLANTIC DETROIT DIESEL	
PROJECT NAME: ABLE EQUIPMENT	
TITLE: ELECTRICAL DETAIL	DWG #: 928-D
RCE QUOTE #: 52134-05	GENSET DWG #: 500PXC6DT2
SHEET #: 3 of 6	DATE: 12/14/07
DRAWN BY: PR/DM	CHECKED BY: CG

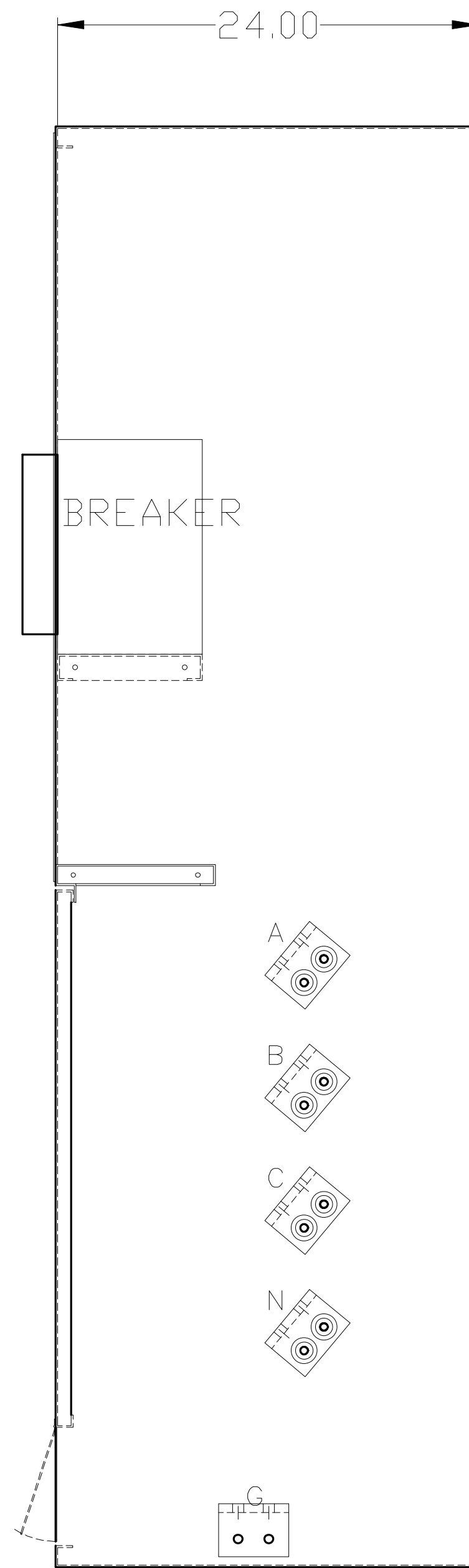
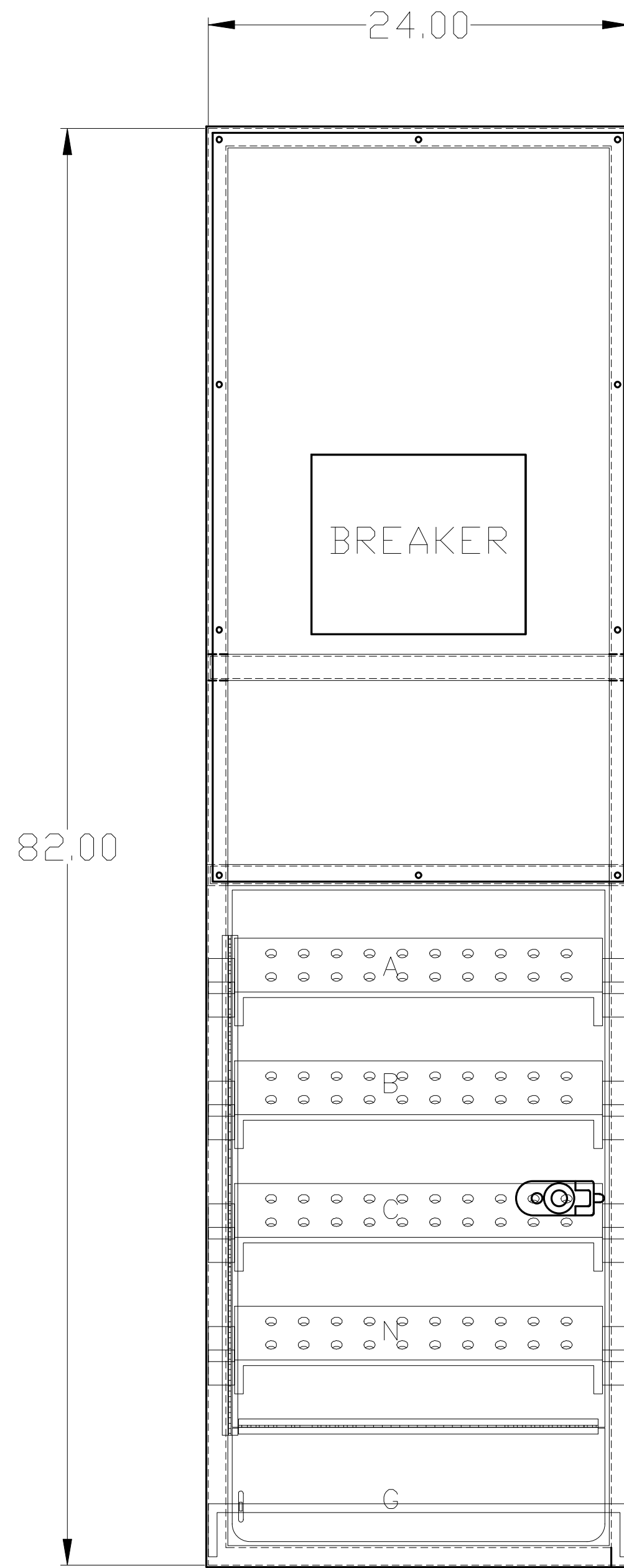
APPROVED AS DRAWN
 APPROVED AS NOTED
 REVISE AS NOTED, RESUBMIT

SIGNATURE _____ DATE _____

ROBINSON
 CUSTOM ENCLOSURES

1740 EISENHOWER DRIVE
 P.O. BOX 5905
 DE PERE, WI 54115-5905
 (920) 490-3250 (MAIN)
 (920) 617-3308 (FAX)

REV.	REVISION DESCRIPTION	DATE	BY
D	UPDATED ELECTRICAL	5/19/08	HB
C	UPDATED ELECTRICAL	2/14/08	DM
B	CHANGED TO 30' CONTAINER	1/21/08	DM
A	CHANGED TO 20' L X 102H ISO BOX, ADDED BREAKER BOX DETAIL	1/08/08	PR



APPROVED AS DRAWN
 APPROVED AS NOTED
 REVISE AS NOTED, RESUBMIT

 SIGNATURE DATE
ROBINSON
 CUSTOM ENCLOSURES

THE DATA CONTAINED HEREIN IS PROPRIETARY AND CONFIDENTIAL, REPRODUCTION OR DISTRIBUTION OF ANY PART REQUIRES WRITTEN CONSENT OF ROBINSON CUSTOM ENCLOSURES. THE DATA IS THE PROPERTY OF ROBINSON CUSTOM ENCLOSURES AND ITS POSSESSION CONFERS NO LICENSE TO USE OR TO DISCLOSE IT TO OTHERS FOR ANY PURPOSE WHATSOEVER. ALL RIGHTS RESERVED

CUSTOMER NAME: ATLANTIC DETROIT DIESEL
 PROJECT NAME: ABLE EQUIPMENT
 TITLE: BREAKER/CONNECTION BOX DWG #: 928-D
 RCE QUOTE #: 52134-05 GENSET DWG #: 500PXC6DT2
 SHEET #: 4 of 6 DATE: 12/14/07 DRAWN BY: PR/DM CHECKED BY: CG

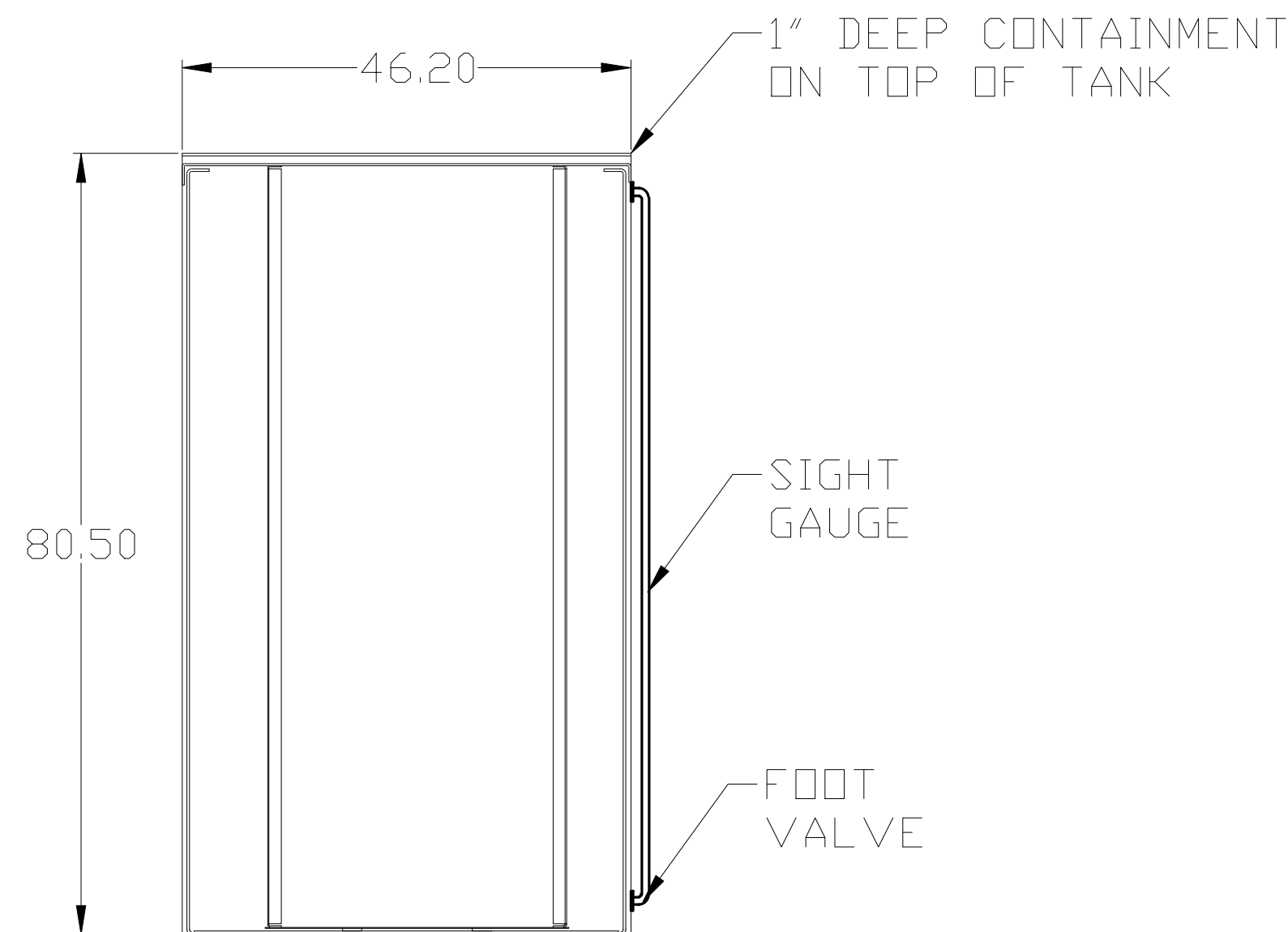
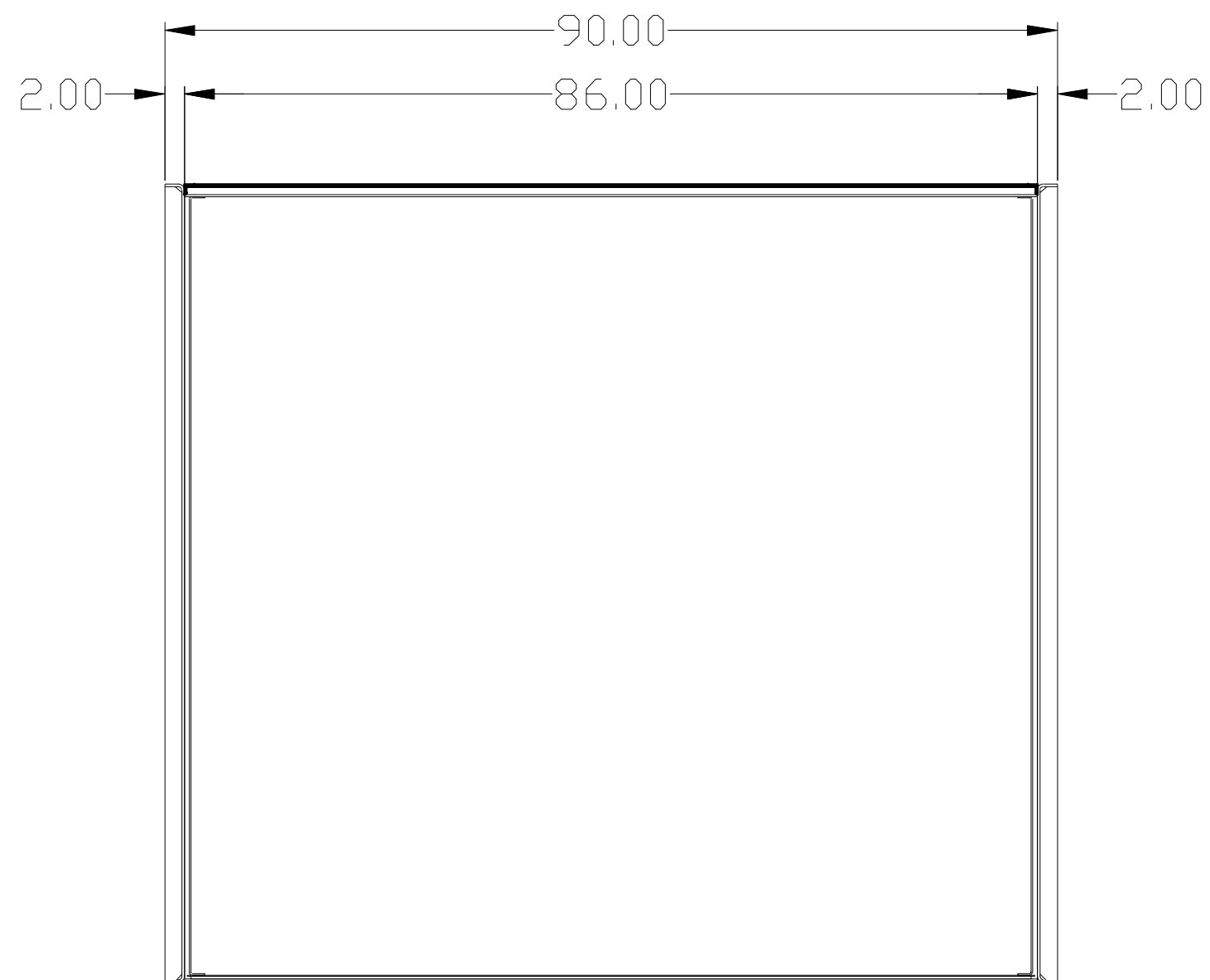
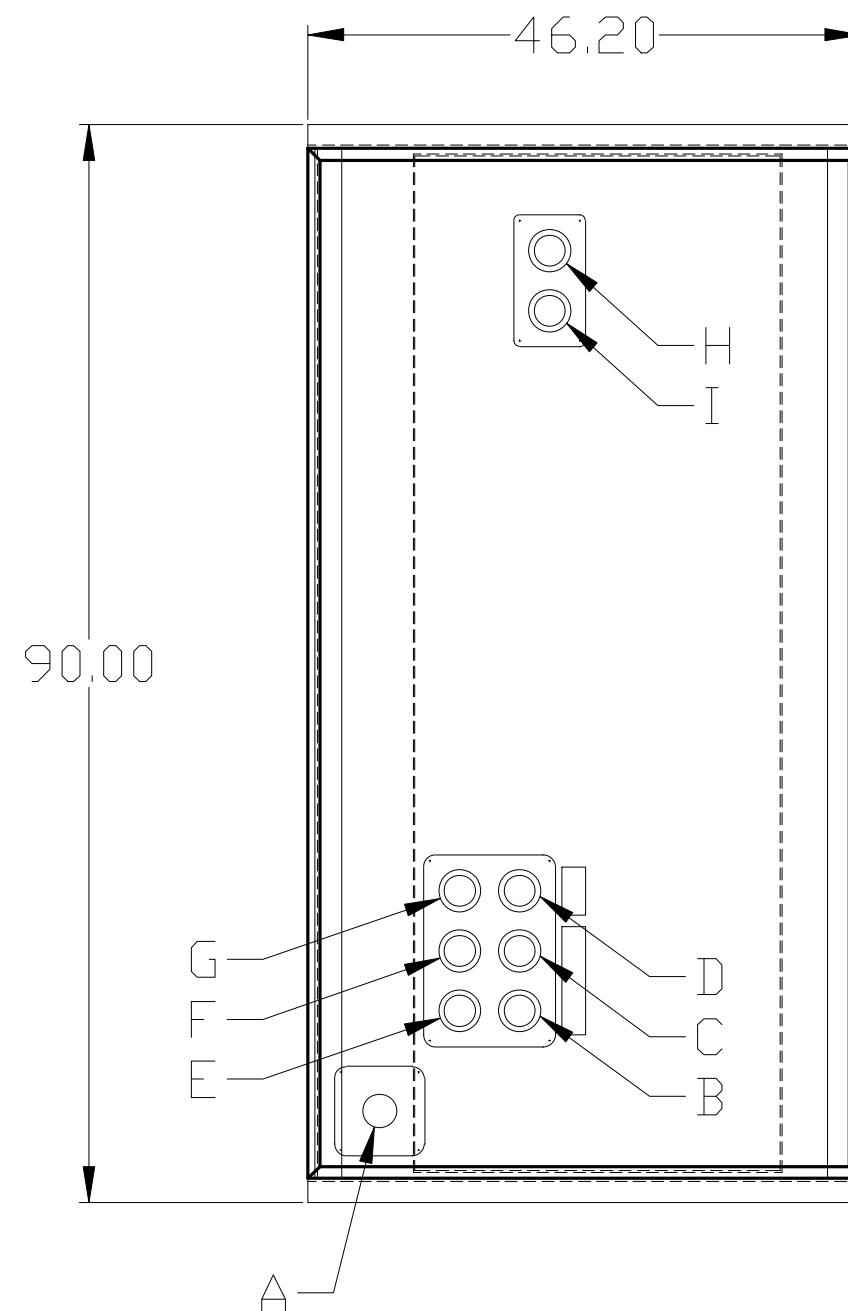
1740 EISENHOWER DRIVE
 P.O. BOX 5905
 DE PERE, WI 54115-5905
 (920) 490-3250 (MAIN)
 (920) 617-3308 (FAX)

REV.	REVISION DESCRIPTION	DATE	BY
D	UPDATED ELECTRICAL	5/19/08	HB
C	UPDATED ELECTRICAL	2/14/08	DM
B	CHANGED TO 30' CONTAINER	1/21/08	DM
A	CHANGED TO 20'L X 102H ISO BOX, ADDED BREAKER BOX DETAIL	1/08/08	PR

REV.	REVISION DESCRIPTION	DATE	BY
-	-	-	-

FUEL TANK: UL 142 LISTED; NO DIESEL FUEL ONLY
 CAPACITY: 855 GALLONS
 TANK STYLE: CLOSED TOP DIKE
 CONTAINMENT: 110%
 OUTER WALLS: 1/4" P&D
 INNER TANK: 10 GA P&D
 TOP: 7 GA P&D

- FITTINGS:
- A 2" NPT RUPTURE BASIN ALARM
 - B 2" NPT NORMAL VENT
 - C 2" NPT FUEL GAUGE
 - D 2" NPT FUEL FILL
 - E 2" NPT LOW FUEL ALARM
 - F 2" NPT FITTING (EXTRA)
 - G 2" NPT FITTING (EXTRA)
 - H 2" NPT GENERATOR FUEL SUPPLY W/CHECK VALVE & SHUT-OFF VALVE
 - I 2" NPT GENERATOR FUEL RETURN W/SHUT-OFF VALVE



APPROVED AS DRAWN
 APPROVED AS NOTED
 REVISE AS NOTED, RESUBMIT

SIGNATURE _____ DATE _____



1740 EISENHOWER DRIVE
 P.O. BOX 5905
 DE PERE, WI 54115-5905
 (920) 490-3250 (MAIN)
 (920) 617-3308 (FAX)

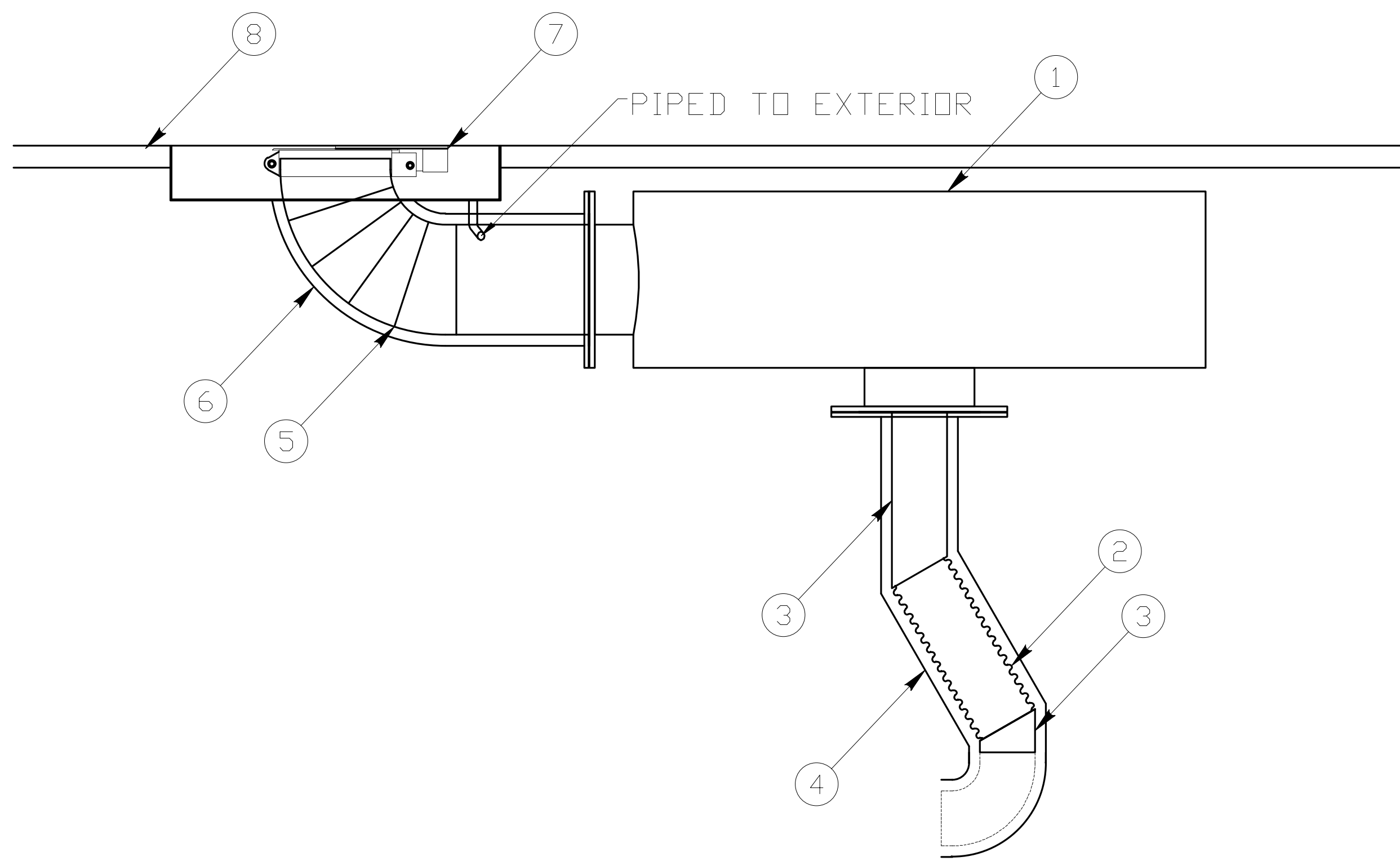
THE DATA CONTAINED HEREIN IS PROPRIETARY AND CONFIDENTIAL, REPRODUCTION OR DISTRIBUTION OF ANY PART REQUIRES WRITTEN CONSENT OF ROBINSON CUSTOM ENCLOSURES. THE DATA IS THE PROPERTY OF ROBINSON CUSTOM ENCLOSURES AND ITS POSSESSION CONFERS NO LICENSE TO USE OR TO DISCLOSE IT TO OTHERS FOR ANY PURPOSE WHATSOEVER. ALL RIGHTS RESERVED

CUSTOMER NAME: ATLANTIC DETROIT DIESEL	
PROJECT NAME: ABLE EQUIPMENT	
TITLE: TANK DETAIL	DWG #: 928-D
RCE QUOTE #: 52134-05	GENSET DWG #: 500PXC6DT2
SHEET #: 5 of 6	DATE: 12/14/07
DRAWN BY: PR/DM	CHECKED BY: CG

REV.	REVISION DESCRIPTION	DATE	BY
D	UPDATED ELECTRICAL	5/19/08	HB
C	UPDATED ELECTRICAL	2/14/08	DM
B	CHANGED TO 30' CONTAINER	1/21/08	DM
A	CHANGED TO 20'L X 102H ISO BOX, ADDED BREAKER BOX DETAIL	1/08/08	PR

REV.	REVISION DESCRIPTION	DATE	BY
-	-	-	-

ITEM #	DESCRIPTION	SUPPLIED BY	QTY.
1	SILENCER	ROBINSON CUSTOM ENCLOSURES	1
2	5" ELBOW W/FLEX	ATLANTIC DETROIT DIESEL	1
3	5" MITER PIPE	ROBINSON CUSTOM ENCLOSURES	1
4	5" WRAP	ROBINSON CUSTOM ENCLOSURES	1
5	10" 90° ELBOW	ROBINSON CUSTOM ENCLOSURES	1
6	10" ELBOW WRAP	ROBINSON CUSTOM ENCLOSURES	1
7	10" RAIN CAP	ROBINSON CUSTOM ENCLOSURES	1
8	EXHAUST BOX	ROBINSON CUSTOM ENCLOSURES	



APPROVED AS DRAWN
 APPROVED AS NOTED
 REVISE AS NOTED, RESUBMIT

 SIGNATURE DATE

ROBINSON
 CUSTOM ENCLOSURES

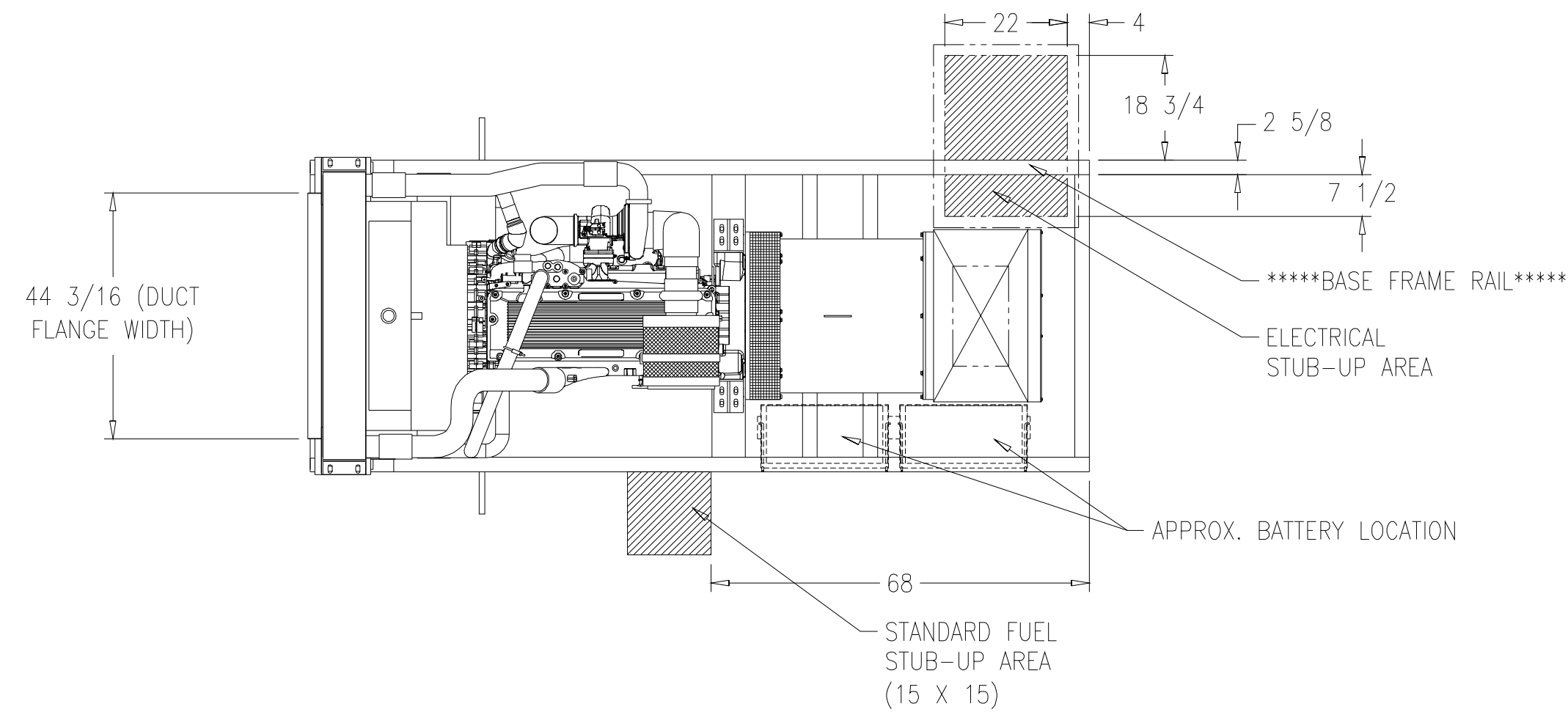
1740 EISENHOWER DRIVE
 P.O. BOX 5905
 DE PERE, WI 54115-5905
 (920) 490-3250 (MAIN)
 (920) 617-3308 (FAX)

THE DATA CONTAINED HEREIN IS PROPRIETARY AND CONFIDENTIAL. REPRODUCTION OR DISTRIBUTION OF ANY PART REQUIRES WRITTEN CONSENT OF ROBINSON CUSTOM ENCLOSURES. THE DATA IS THE PROPERTY OF ROBINSON CUSTOM ENCLOSURES AND ITS POSSESSION CONFERS NO LICENSE TO USE OR TO DISCLOSE IT TO OTHERS FOR ANY PURPOSE WHATSOEVER. ALL RIGHTS RESERVED

CUSTOMER NAME: ATLANTIC DETROIT DIESEL
 PROJECT NAME: ABLE EQUIPMENT
 TITLE: EXHAUST DRAWING DWG #: 928-D
 RCE QUOTE #: 52134-05 GENSET DWG #: 500PXC6DT2
 SHEET #: 6 of 6 DATE: 12/14/07 DRAWN BY: PR/DM CHECKED BY: CG

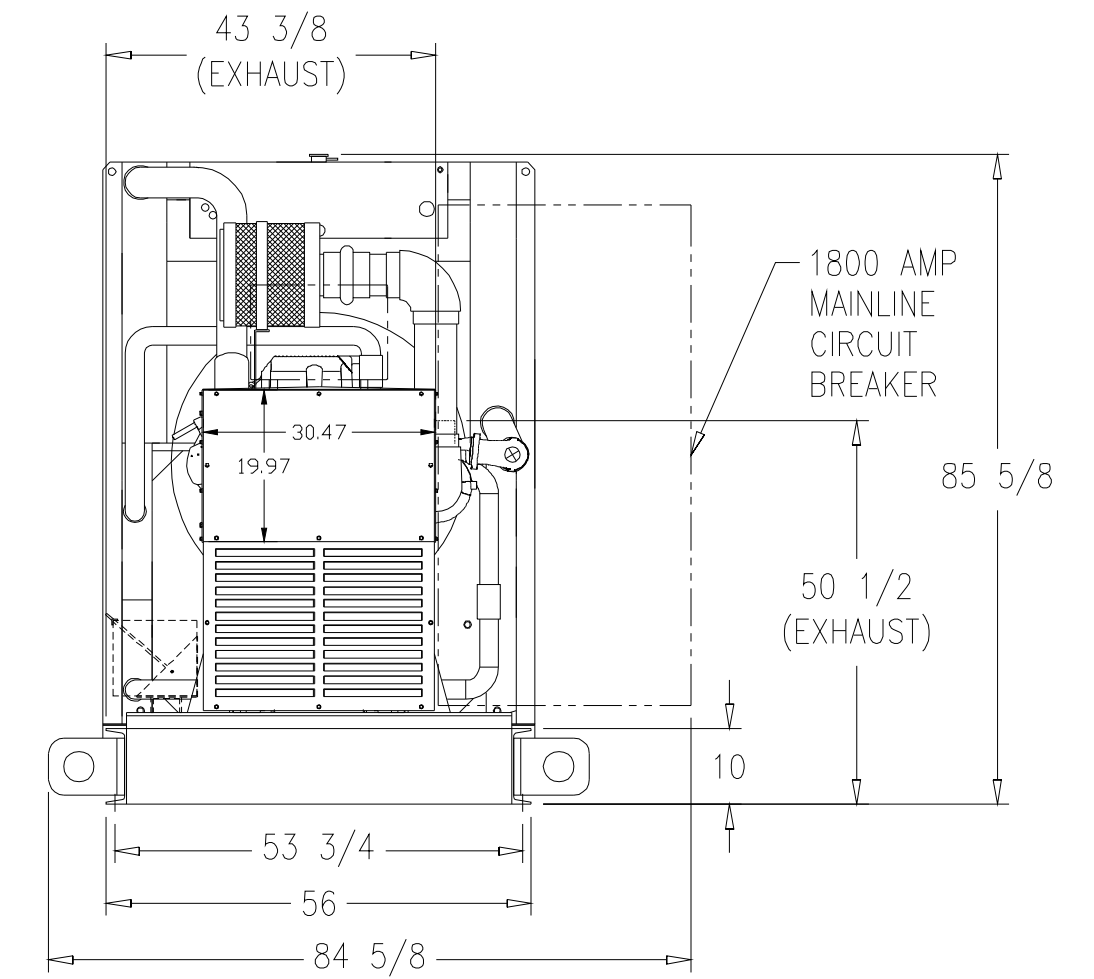
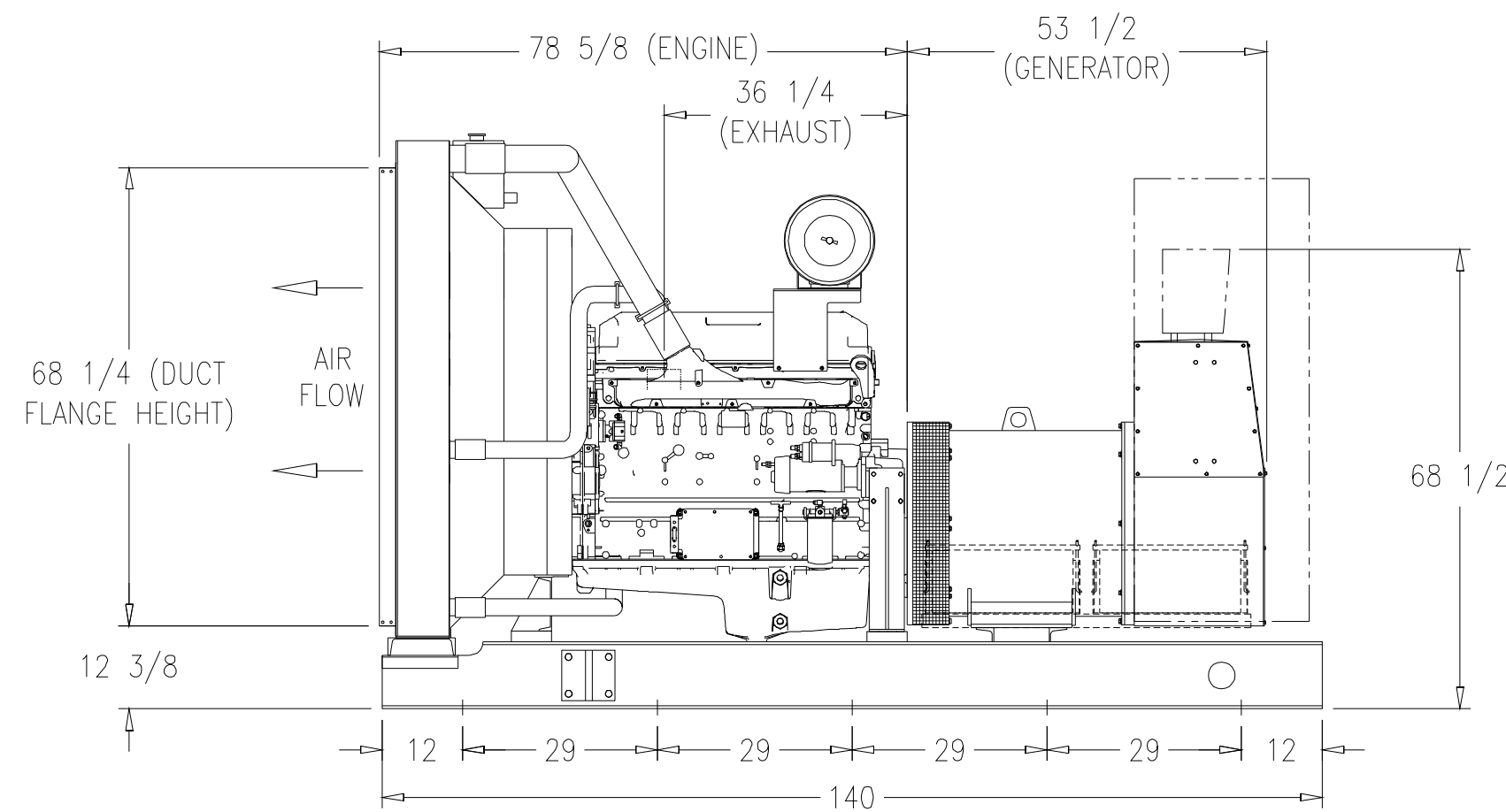
REV.	REVISION DESCRIPTION	DATE	BY	REV.	REVISION DESCRIPTION	DATE	BY
D	UPDATED ELECTRICAL	5/19/08	HB	-	-	-	-
C	UPDATED ELECTRICAL	2/14/08	DM	-	-	-	-
B	CHANGED TO 30' CONTAINER	1/21/08	DM	-	-	-	-
A	CHANGED TO 20'L X 102H ISO BOX, ADDED BREAKER BOX DETAIL	1/08/08	PR	-	-	-	-

DWG. #: 500PXC6DT2(6063HK)OPU-MD

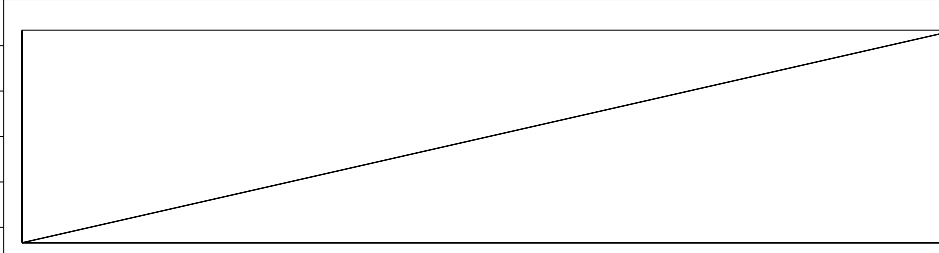


NOTES:

- FUEL SYSTEM CONNECTIONS:
SUPPLY: 3/4 NPT RETURN: 1/2 NPT



REV.	DATE	REVISION DESCRIPTION	INITIALS
A	05-17-07	INITIAL RELEASE TO SALES AND ENGINEERING	JDA



THIS DRAWING, IN WHOLE AND IN DETAIL, IS PROPERTY OF THE MANUFACTURER OF WILLED POWER GENERATOR PRODUCTS AND MUST NOT BE USED EXCEPT IN CONNECTION WITH WILLED POWER GENERATION WORK. ALL RIGHTS OF DESIGN OR INVENTION ARE RESERVED.

GEN-SET INFORMATION	
ENGINE: 6063HK36	ENCLOSURE: NA
GENERATOR: 572 RSL	BREAKER: 1800 AMP
RADIATOR: 86696(DR2781)	TANK: NA
RADIATOR AMBIENT: 50C	MUFFLER: NA
DUCT FLANGE: 105-4593	TRAILER: NA
CONTROL PANEL: AS SPECIFIED	ISOLATORS: PADS
BASE: 102-2782	

DIMENSIONAL LAYOUT	
DRAWN TO SCALE ALL DIMENSIONS ARE IN INCHES	MODEL: 500PXC6DT2
DATE: 05-17-07	DRAWN BY: JDA
DWG. #: 500PXC6DT2(6063HK)OPU-MD	

APPROVED AS DRAWN
 APPROVED AS NOTED
 REVISE AS NOTED, RESUBMIT

 SIGNATURE DATE

ROBINSON
 CUSTOM ENCLOSURES

THE DATA CONTAINED HEREIN IS PROPRIETARY AND CONFIDENTIAL, REPRODUCTION OR DISTRIBUTION OF ANY PART REQUIRES WRITTEN CONSENT OF ROBINSON CUSTOM ENCLOSURES. THE DATA IS THE PROPERTY OF ROBINSON CUSTOM ENCLOSURES AND ITS POSSESSION CONFERS NO LICENSE TO USE OR TO DISCLOSE IT TO OTHERS FOR ANY PURPOSE WHATSOEVER. ALL RIGHTS RESERVED

CUSTOMER NAME: ATLANTIC DETROIT DIESEL	
PROJECT NAME: ABLE EQUIPMENT	
TITLE: GENSET DRAWING	DWG #: 928-D
RCE QUOTE #: 52134-05	GENSET DWG #: 500PXC6DT2
SHEET #: 1 of 1	DATE: 12/14/07
DRAWN BY: PR/DM	CHECKED BY: CG

1740 EISENHOWER DRIVE
 P.O. BOX 5905
 DE PERE, WI 54115-5905
 (920) 490-3250 (MAIN)
 (920) 617-3308 (FAX)

REV.	REVISION DESCRIPTION	DATE	BY	REV.	REVISION DESCRIPTION	DATE	BY
D	UPDATED ELECTRICAL	5/19/08	HB				
C	UPDATED ELECTRICAL	2/14/08	DM				
B	CHANGED TO 30' CONTAINER	1/21/08	DM				
A	CHANGED TO 20'L X 102H ISO BOX, ADDED BREAKER BOX DETAIL	1/08/08	PR				